



MONTHLY MEMBERSHIP PROGRESS REPORT

District 201Q1

Results as of: 1/31/2015

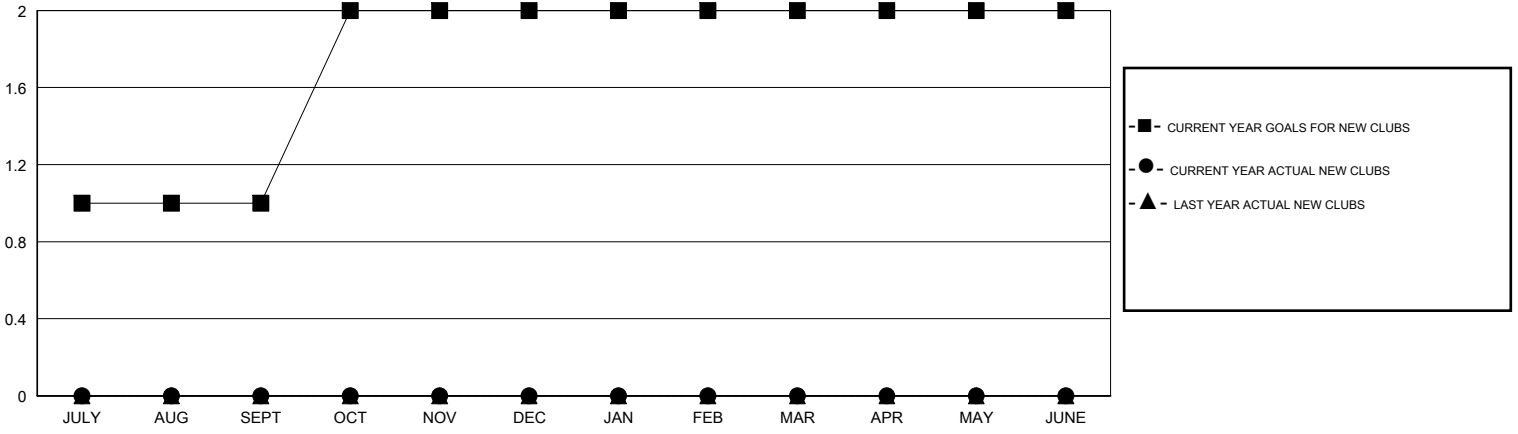
GMT: John Muller

LOCATION AUSTRALIA

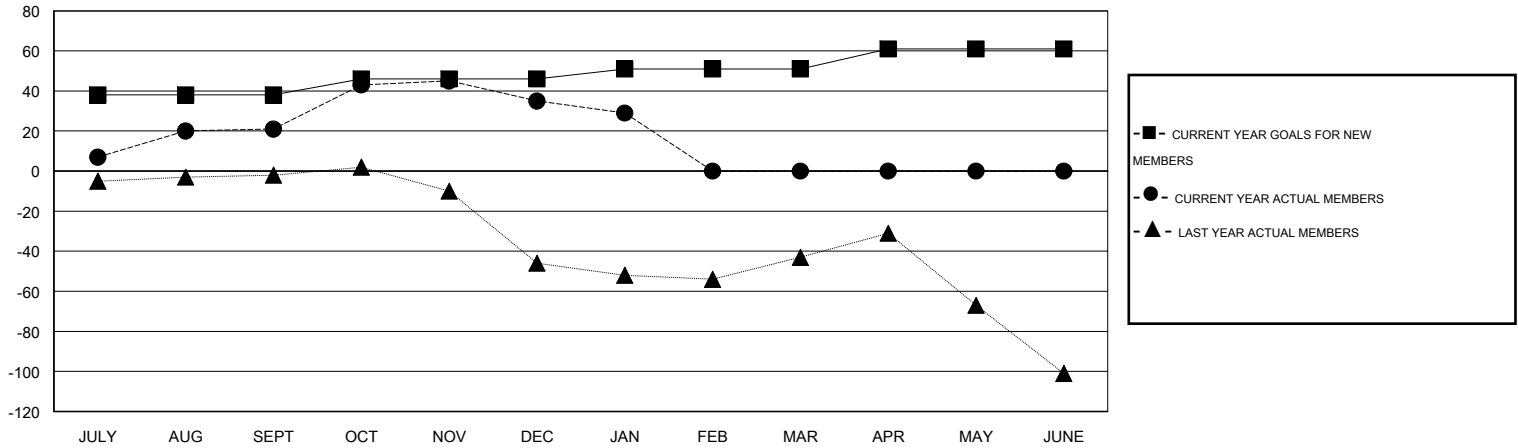
GMT CA 7

| Clubs | | | | | Members | | | | |
|-----------------------|---------------|-----------|---------------|---------------|-----------------------|-----------------|-------------------------------|-----------------|---------------|
| RESULTS FOR 2014-2015 | | | | | RESULTS FOR 2014-2015 | | | | |
| QUARTER | NEW CLUB GOAL | NEW CLUBS | DROPPED CLUBS | NET GAIN/LOSS | QUARTER | NEW MEMBER GOAL | CHARTER AND NEW MEMBERS ADDED | DROPPED MEMBERS | NET GAIN/LOSS |
| JULY/AUG/SEPT | 1 | 0 | 1 | -1 | JULY/AUG/SEPT | 38 | 70 | 49 | 21 |
| OCT/NOV/DEC | 1 | 0 | 1 | -1 | OCT/NOV/DEC | 8 | 87 | 73 | 14 |
| JAN/FEB/MAR | 0 | 0 | 0 | 0 | JAN/FEB/MAR | 5 | 12 | 18 | -6 |
| APR/MAY/JUNE | 0 | 0 | 0 | 0 | APR/MAY/JUNE | 10 | 0 | 0 | 0 |

GOALS AND ACTUAL NEW CLUBS CUMULATIVE



GOALS AND ACTUAL MEMBERS CUMULATIVE



| | | |
|------------------------|---|--------------------------------|
| DROPPED CLUBS: 2 | 56 CLUBS OF 84 ADDED 1 OR MORE NEW MEMBERS | GENDER DISTRIBUTION |
| | | MALE 1,175 (60.60%) |
| | | FEMALE 764 (39.40%) |
| DROPPED MEMBERS | CLICK HERE FOR HEALTH ASSESSMENT DATA | FAMILY UNIT MEMBERS 461 |
| DECEASED 18 | | HEAD OF HOUSEHOLD 227 |
| CLUB CANCELLED 0 | | NON-HEAD OF HOUSEHOLD 234 |
| OTHER 122 | | |
| TOTAL 140 | | |